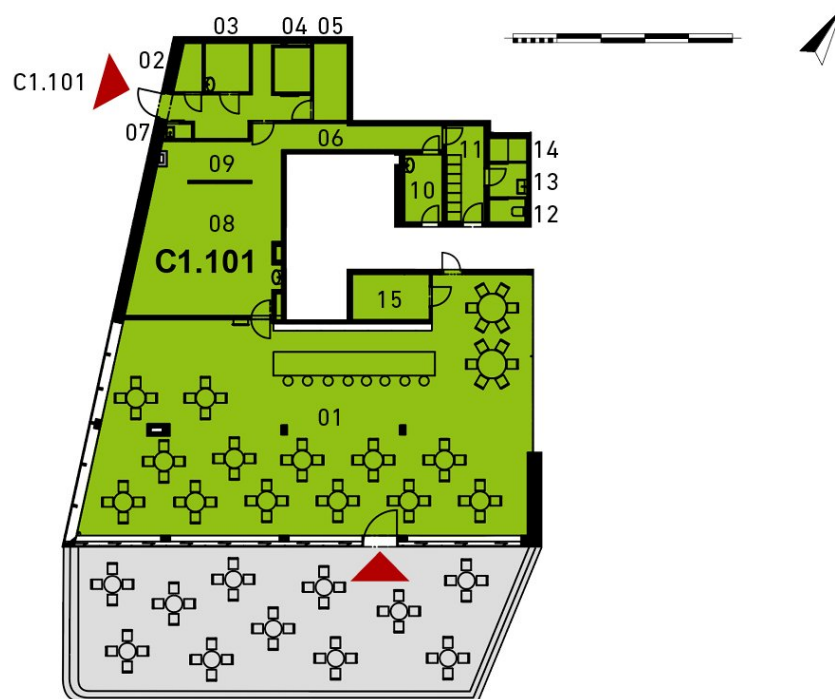


# VITALITY REZIDENCE | C1.101 | restaurant | 1st floor

developer: the SATPO company



price incl. VAT

On request

| room                      | m <sup>2</sup>             |
|---------------------------|----------------------------|
| 01 restaurant             | 171.9 m <sup>2</sup>       |
| 02 storage premises       | 2.1 m <sup>2</sup>         |
| 03 part of the kitchen    | 3.9 m <sup>2</sup>         |
| 04 storage premises       | 3.0 m <sup>2</sup>         |
| 05 storage premises       | 4.7 m <sup>2</sup>         |
| 06 corridor               | 8.7 m <sup>2</sup>         |
| 07 storage premises       | 0.8 m <sup>2</sup>         |
| 08 kitchen                | 32.8 m <sup>2</sup>        |
| 09 part of the kitchen    | 8.3 m <sup>2</sup>         |
| 10 office                 | 4.6 m <sup>2</sup>         |
| 11 changing room          | 6.6 m <sup>2</sup>         |
| 12 WC                     | 1.5 m <sup>2</sup>         |
| 13 wc / hall              | 2.3 m <sup>2</sup>         |
| 14                        | 1.6 m <sup>2</sup>         |
| 15 stock                  | 6.4 m <sup>2</sup>         |
| 17 corridor               | 10.5 m <sup>2</sup>        |
| walls, columns and shafts | 12.3 m <sup>2</sup>        |
| living area               | 282.0 m <sup>2</sup>       |
| usable area               | 282.0 m <sup>2</sup>       |
| 00                        | 78.0 m <sup>2</sup>        |
| <b>total area</b>         | <b>360.0 m<sup>2</sup></b> |



Data valid as of: 22.01.2020 | The company SATPO reserves the right to change. All the materials and information are of a tentative character only.  
The areas of partitions, shafts and columns are included in the areas of the units stated in compliance with Government Decree 366/2013 Coll.